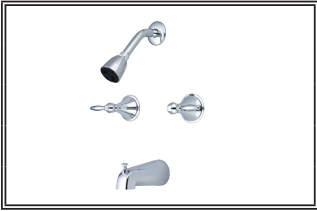


# Central Brass COMPANY

## SPECIFICATION SHEET

Date: \_\_\_\_\_

### TWO HANDLE TUB & SHOWER SET



**Model #:** \_\_\_\_\_  
**Specific Features:** \_\_\_\_\_  
**Project Name:** \_\_\_\_\_  
**Submitted For:** \_\_\_\_\_  
**Date:** \_\_\_\_\_

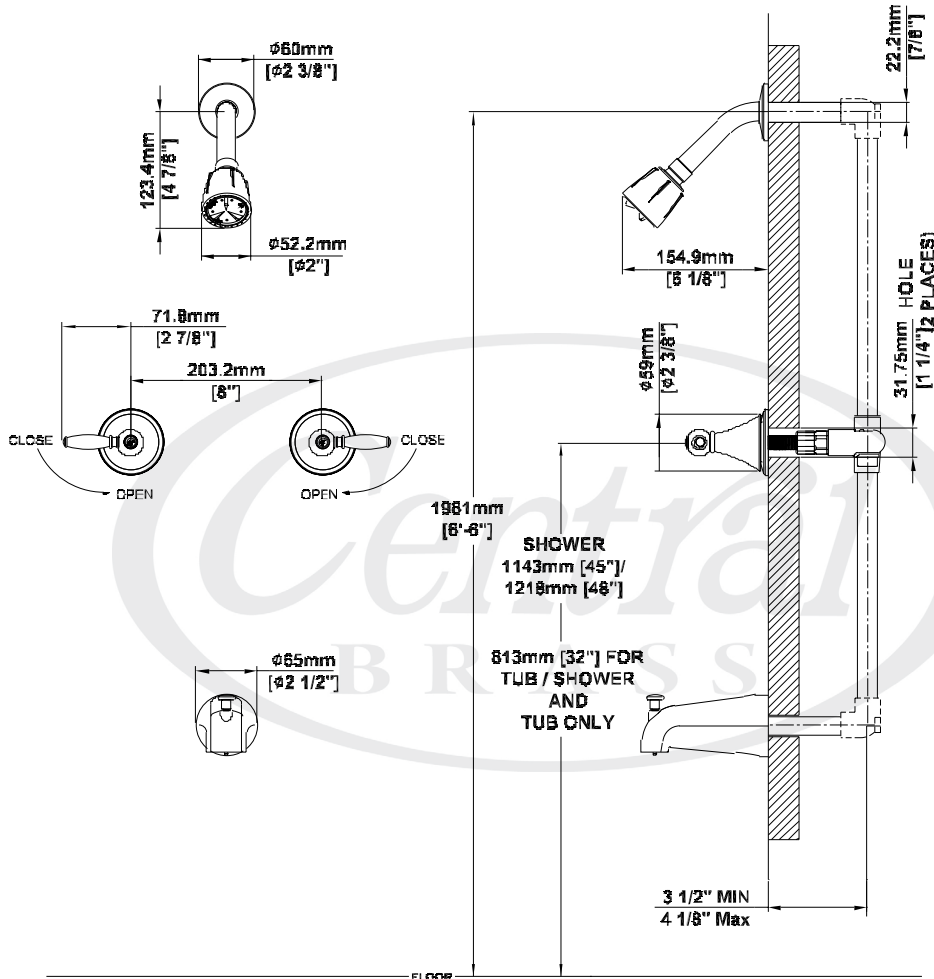
- Two Handle Tub & Shower Set
- Lever Handles
- Shower Head, Arm & Flange
- 1/2" CXC Inlets
- Ceramic Disc Cartridges
- 8" Centers
- Built-in Transfer Valve
- 1/2" IPS & Slip-on Combo Diverter Tub Spout

# 80897-L3  
SHOWN

Model #	Features	Finish
80897-L3	Tub & Shower Set	PVD PC
80805-L3	Valve Set	PVD PC
80808-ZL3	Tub Set	PVD PC
80826-L3	Shower Set	PVD PC

Central Brass products are engineered and manufactured to meet the following standards and codes:

ASME A112.18.1  
ANSI A117.1



Brecksville, OH  
www.centralbrass.com  
Central Brass Company © 2011